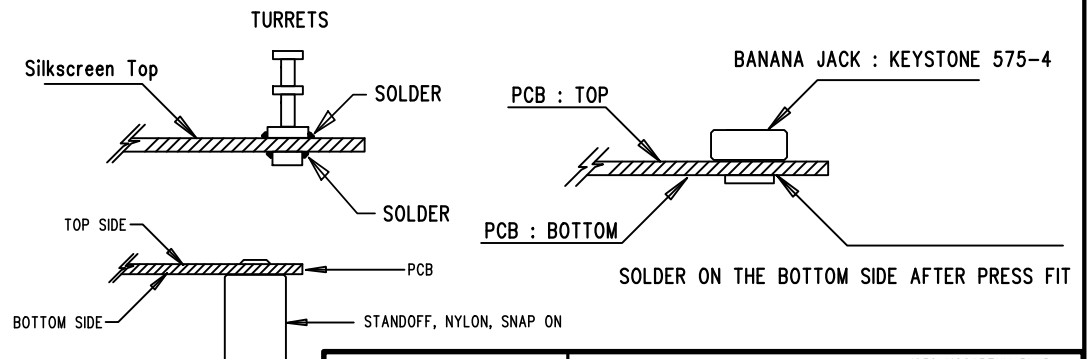



TOP SILKSCREEN  
LINEAR TECHNOLOGY DATE: 11-07-2016  
DC2418A-2 LTC4368-1, LTC4368-2  
100V UV/OV AND REVERSE PROTECTION  
CONTROLLER WITH BIDIRECTIONAL CIRCUIT BREAKER

## NOTES: UNLESS OTHERWISE SPECIFIED

1. WORKMANSHIP SHALL BE IN ACCORDANCE WITH IPC-A-610.
2. ASSEMBLY PROCESS SHALL INCLUDE: REFLOW SOLDER TOP SIDE SMD. MAXIMUM SOLDER TEMPERATURE IS 240 DEGREES CELSIUS.
3. PARTS TO OMIT WILL BE SPECIFIED ON THE BILL OF MATERIALS. LOCATIONS OF OMITTED PARTS SHALL BE FREE OF SOLDER. MASK THE SOLDER STENCIL WHERE SMT PARTS ARE OMITTED.
4. INSTALL SHUNTS AS SHOWN ON ASSY DRAWING.
5. DEPANELIZE BOARDS AFTER ASSEMBLY AND ROUTE-OUT THE BREAKOUT TABS ON FOUR SIDES OF THE BOARD EDGE.
6. DO NOT APPLY ANY KIND OF ASSEMBLY STAMP OR QA STAMP TO ANY BOARD.
7. INSTALL TURRETS, BANANA JACK, 4 STANDOFFS AT 4 LOCATIONS AS SHOWN BELOW:



ASSY TYPE	U1	Q1	Q2, Q3	R4	R5
DC2418A-A	LTC4368CMS-1	OPT	SiR870ADP-T1-GE3	0.005 OHM	OPT
DC2418A-B	LTC4368CMS-2	Si7942DP-T1-E3	OPT	OPT	0.02 OHM

APPROVALS		 <div> 1630 MCCARTHY BLVD  MILPITAS, CA 95035  PH: (408)432-1900  www.linear.com  LTC CONFIDENTIAL-  FOR CUSTOMER USE ONLY </div>		
PCB DES.	AK			
APP ENG.	VLAD O	TITLE: TOP, ASSEMBLY DRAWING		
		100V UV/OV AND REVERSE PROTECTION CONTROLLER WITH BIDIRECTIONAL CIRCUIT BREAKER		
		SIZE N/A	IC NO. LTC4368-1, LTC4368-2 DEMO CIRCUIT 2418A	REV. 2
SCALE = NONE		FILENAME: DC2418A-1.PCB		SHT 1 OF 2